



EXECUTIVE SUMMARY REPORT

WAUNAKEE SCHOOLS: HERITAGE ELEMENTARY

JUNE 17, 2016

What's New?

- Now that summer has begun, the whole campus is closed for construction. Crews have been working hard inside and out on all different areas of the campus. Demolition is in full swing, while exterior sitework is just beginning. *Although the demolition may not be as exciting as the renovations, it is a huge step towards the finished product.*

The Past Week

- Mobilization
- Demolition
 - Interior
 - Exterior
- Exterior Sitework
 - Lacrosse Field
 - Started Setting Storm Drain Structures
- Started Preparing Roof

Coming Up in the Week Ahead

- Start Erecting Steel Studs
- Start Setting Door Frames
- Start Laying Masonry
- Start Rough-Ins
 - Mechanical
 - Electrical
 - Plumbing



Exterior demolition is really making progress on the playground area.



The stage in the gym has been completely demolished and removed, now work can begin to transform this area into a multipurpose space!



Globalcom is getting all the low voltage cabling pulled through the ceiling.



Excavators are hard at work on the athletic field!



Did you know? In Lima, Peru there is a bridge that was built in 1608 that is still standing today. The amazing part is that the mortar for the bridge was mixed with the whites from approximately 10,000 eggs instead of water in an attempt to improve its consistency!



EXECUTIVE SUMMARY REPORT

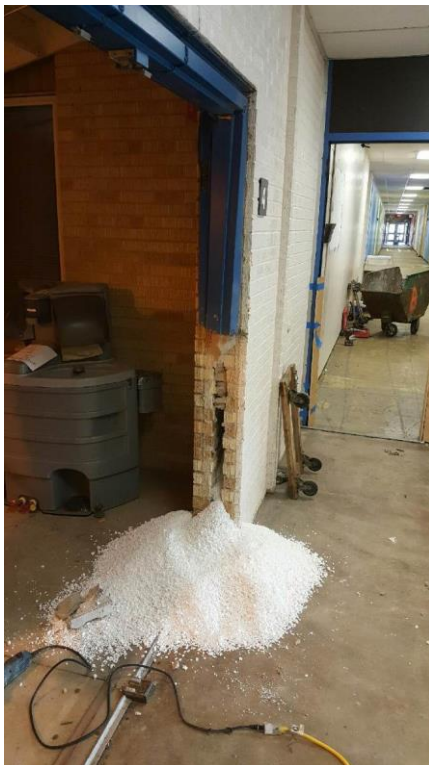
WAUNAKEE SCHOOLS: PRAIRIE ELEMENTARY



All the fixtures and the wet wall have been demolished, the area is now ready for updated restrooms.



One of the many drain structures that will be set behind the school.



Snow in June? Luckily, it is only insulation that poured out of this wall after the frame was removed.



These three walls have been demolished in preparation for the new room layout.