



EXECUTIVE SUMMARY REPORT

WAUNAKEE SCHOOLS: NEW INTERMEDIATE SCHOOL

Week ending July 29th, 2016

What's New?

We have 33 days before school starts! Rich Hellenbrand and the rest of the facilities crew have been on site daily learning how to operate and maintain the systems on site. On Monday, the front office will be fully operational and on Friday the teachers will start setting up their classroom areas.

The Past Two Weeks

- Asphalt Paving – South & West Parking Lots
- Landscaping – Trees, Shrubs, Outcroppings
- Fire Alarm Inspections
- 1st & 2nd Floor Classroom Furniture Move-in
- Area D – Drop Ceiling Tile
- Flooring in Areas C & D
- Wood Panels Installed All Areas

Coming Up in the Weeks Ahead

- Final Asphalt Paving
- Area C & D Final Cleaning
- Wall Graphics and Murals
- Continue IT Equipment Installation
- Deliver & Install Cardio Room Equipment
- Front Office Operational
- Teacher Setup
- Commissioning of Building Systems



The furniture is staged in the cafeteria and then is distributed throughout the building.



Typical class rooms here (Left/Right); plus, examples of the furniture found in the collaboration areas (above)



Did you know? Fifteen semi-trucks full of furniture were unloaded this week at the Waunakee Intermediate School. The deliveries included 40 movable desks, storage shelving, 24 couches, 44 J-touch monitors and over 1000 chairs!



EXECUTIVE SUMMARY REPORT

WAUNAKEE SCHOOLS: NEW INTERMEDIATE SCHOOL



Ceiling mounted diffuser tiles were installed in the music rooms to enhance its acoustics.



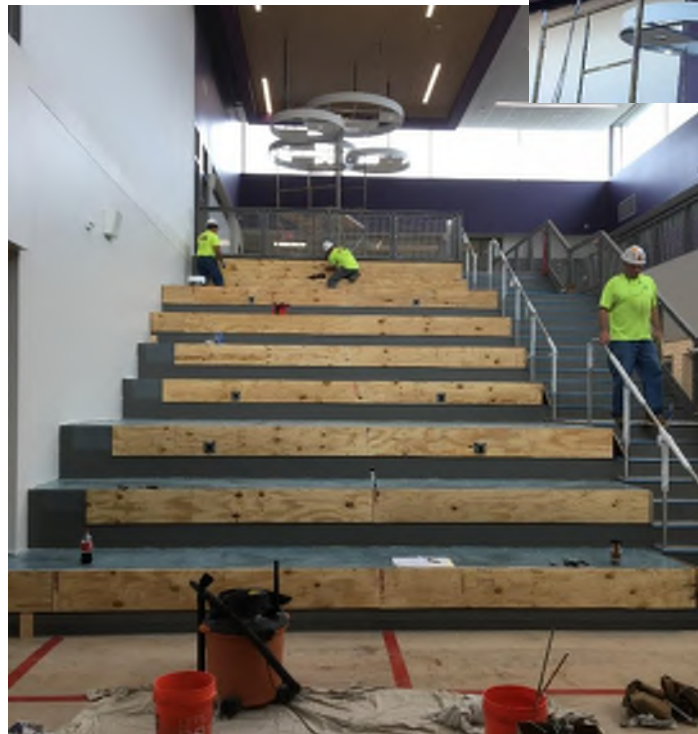
Front office reception desk is ready for equipment and staff



This machine is used to transplant young trees without damaging their roots.



Wood panels distinguishing the different Villages – green is the “Earth” Village



As seen above, wood is being installed on the social stairs. Above the stairs, ceiling “clouds” are in the works.