

# Waunakee Community School District

April 6, 2010 Referendum  
Informational Presentation



**Waunakee Community School District**

Committed to Children . Committed to Community . Committed to Excellence

# Tonight's Agenda

- Review District Growth Planning Process
- Review of Enrollment Projections and Growth Data
- Review of Building Parameters
- Review of Building Options Considered During the Process
- Referendum Questions for April 6th
- Questions?



**Waunakee Community School District**

Committed to Children . Committed to Community . Committed to Excellence .

# Planning Process Overview

- Board of Education has been reviewing enrollment data, school space utilization, Waunakee community growth trends, and facility parameters for the last 18 months.
- Board of Education reviewed the parameters used in previous building referendums.
- Meetings occurred with local developers and municipalities to discuss growth plans.
- The District has monitored over time the number of building permits issued and the impact of this growth on the school system.



**Waunakee Community School District**

Committed to Children . Committed to Community . Committed to Excellence .

# Planning Process Overview

- Community Facility Survey in August-September 2009 to help identify and narrow current building parameters.
- On September 15, 2009, the Board of Education held a community open forum to share district growth information and solicit input on building parameters.
- On October 12, 2009 the Board of Education approved building options for the architect to research.
- On October 26, 2009 the Board of Education held a focus group with previous board members.
- On November 10, 2009 the Board of Education reviewed the building options based on information provided by Bray Architects.
- On November 16, 2009 the Board of Education held a community open forum on building options.
- In December 2009 the Board of Education was not ready to finalize the referendum options, chose to forego a February Referendum, and positioned themselves for an April 2010 referendum.
- In February 2010 the Board of Education approved the April 6<sup>th</sup> referendum questions.



**Waunakee Community School District**

Committed to Children · Committed to Community · Committed to Excellence ·

# Referendum Overview

There will be four referendum questions on the April 6, 2010 ballot.

- Construct a new elementary school with additions to Prairie Elementary and remodeling at the Heritage/Intermediate School site. \$24.9 million.
- Additions and remodeling at the High School. \$8.4 million.
- Exceed the revenue cap by \$750,000 for operating the additional school space, starting with \$375,000 in 2011-2012.
- Exceed the revenue cap by \$375,000 for ongoing maintenance of district facilities starting in 2010-2011.
- **The total cost of these four questions is \$34.5 million and if they all pass will cost the average homeowner \$296 spread over three years (based on a \$285,000 home).**

# Current Enrollment Projections

- **What have we taken into account to ensure that current enrollment projections reflect Waunakee trends?**
- The District uses the UW Applied Populations Lab to assist with enrollment projections in 2003 and again in 2008. The most accurate model from 2003 (housing model) was adjusted to reflect recent Waunakee trends and the economy.
- We worked with Applied Population Labs on our most recent projections to include current local trends. They are basing their projections on data received through meetings with local developers and took into consideration factors unique to Waunakee—district census data, ratio of students/household, projected housing growth, housing turnover, and the economy.



**Waunakee Community School District**

Committed to Children . Committed to Community . Committed to Excellence .

# Current Enrollment Projections

- The Board of Education selected the Residential Enrollment Model for facility planning.
- Using this model, the District's projections identify 1,000 additional students over the next ten years.
- The full enrollment report is available on the Waunakee Community School District webpage at [www.waunakee.k12.wi.us](http://www.waunakee.k12.wi.us).
- The Power Point presentation from Applied Population Lab is also available on the district website.



# Current K-12 Enrollment

- Heritage Elementary K-4 292\*
- Prairie Elementary K-4 505\*
- Arboretum Elementary K-4 541
- Intermediate School 5-6 518
- Middle School 7-8 565
- High School 9-12 1,143
- **TOTAL 3,564**
- \*This number does not include 56 students at Prairie in the Early Childhood Special Education Program, or the 35 students at Heritage in the SPROUTS/EC Program, and 3 students in EC at Arboretum.



**Waunakee Community School District**

Committed to Children . Committed to Community . Committed to Excellence .

# Elementary Population

<b>School</b>	<b>K-4 Population</b> (excludes 56 Sprouts and EC students)	<b>Designed for....</b> based on <u>maximum</u> class size allowed by Board Policy.
<i>Prairie</i>	505	630
<i>Heritage</i>	292	348
<i>Arboretum</i>	541	464
<b>Total K-4</b>	<b>1,338</b>	<b>1,442</b>



**Waunakee Community School District**

Committed to Children . Committed to Community . Committed to Excellence .

# Grade 5-12 Population

School	5-12 Population	Designed for....based on <u>maximum</u> class size allowed by Board Policy.
<i>Intermediate</i>	518	550
<i>Middle School</i>	565	600
<i>High School</i>	1,143	1,200
<b>6-12 Total</b>	<b>2,226</b>	<b>2,350</b>
<b>K-12 Total</b>	<b>3,564</b>	<b><u>3,792</u></b>



**Waunakee Community School District**

Committed to Children . Committed to Community . Committed to Excellence .

# Applied Population Lab Projection Residential Development Model

	09-10	09-10 Actual No EC or Sprouts	11-12	13-14	15-16	17-18
<b>K-4</b>	1,335	1,338	1,388	1,525	1,557	1,636
<b>5-6</b>	526	518	613	668	733	712
<b>7-8</b>	570	565	600	705	757	826
<b>9-12</b>	1,128	1,143	1,146	1,225	1,349	1,496
<b>Total</b>	3,559	3,564	<b><u>3,748</u></b>	4,122	4,396	4,670



**Waunakee Community School District**

Committed to Children . Committed to Community . Committed to Excellence .

# When do we meet/exceed maximum capacity?

- Grades K-4                      2012-2013
  - **Grades 5-6**                      **2010-2011**
  - Grades 7-8                      2012-2013
  - Grades 9-12                      2013-2014
- 
- Grades K-12                      2012-2013
  - These dates represent the point at which we meet or exceed maximum school capacity using maximum class size guidelines.
  - If we utilized the **“Optimal Size”** for class size under the class size policy, the school district would meet or exceed facility capacity during the 2010-2011 school year.



**Waunakee Community School District**

Committed to Children . Committed to Community . Committed to Excellence .

# Parameters Considered by the Board

- The building parameter categories include:
  - Expected Community Growth.
  - Neighborhood Schools.
  - School Size.
  - Grade Configuration.
  - Flexibility of Facility Use.
  - Expandability of Facilities.
  - Utilization of Federal Low/No Interest Loan Programs.
  - Utilization of Green Building Practices.



**Waunakee Community School District**

Committed to Children . Committed to Community . Committed to Excellence .

# Options Explored by the Board

- Changing grade configurations at the elementary, intermediate, and middle school levels.
- Consideration of schools that house K-5 students, 6-8 students, and 5-8 students, 7-9 students, and 10-12 students.
- Adding on/remodeling all buildings K-12.
- Building a new middle school.
- Building a new intermediate school.
- Building a new elementary school.
- Many combined options with the above stated components.



**Waunakee Community School District**

Committed to Children . Committed to Community . Committed to Excellence .

# Building Plan Development

- Building options were developed based on current and future enrollment.
- All options were considered with regard to how they fit into a Long Range Plan—2018 and beyond.
- The April 6<sup>th</sup> Referendum addresses a long range plan for grades K-6.
- The long range plan for grades 7-12 requires two phases—the April 6<sup>th</sup> Referendum is the first phase.



**Waunakee Community School District**

Committed to Children . Committed to Community . Committed to Excellence .

# **K-6 Referendum Question**

## **INITIAL RESOLUTION SCHOOL BUILDING PROGRAM**

**BE IT RESOLVED** by the School Board of Waunakee Community School District, Dane County, Wisconsin that there shall be issued pursuant to Chapter 67 of the Wisconsin Statutes, general obligation bonds in an amount not to exceed \$24,950,000 for the public purpose of paying the cost of a school building program, consisting of the construction, furnishing and equipping of a new elementary school; and the construction of additions to and remodeling, furnishing and equipping of Prairie Elementary School and Heritage/Intermediate School.

**AUTHORIZING GENERAL OBLIGATION BONDS IN AN AMOUNT NOT TO EXCEED \$24,950,000 FOR A K-6 Building Program.**

# K-6 Referendum Question

- Build a new K-4 elementary school
  - This plan would include a new facility to serve six classrooms per grade level (6-track).
  - It is expected that the students from Heritage Elementary would attend this school. (This issue is still to be determined.)
  - Elementary boundaries would be redrawn to balance the K-4 distribution of students between three schools.



# K-6 Referendum Question

- The K-6 Plan also includes renovations to Prairie and the Heritage/Intermediate facilities.
- The K-6 Plan allows for 16 classrooms per grade level (K-6).
- We have Board Policy on class sizes. Under this plan we can meet “Optimum Class Sizes” through 2018, and meet “Maximum Class Size Capacity” beyond 2018.
- The total estimated cost of this K-6 option is: \$24.9 million.

# Location of the New K-4 Elementary

- The Board has tentatively agreed to locate the new elementary school West of County Q on a 40 acre parcel on Woodland owned by the school district.
- This parcel is currently not included in the Urban Service Area.
- The District is in the process of submitting an application to the Capital Area Regional Planning Commission. This application could take 9 months to one year.
- The referendum question for the elementary school does not designate a specific school site.

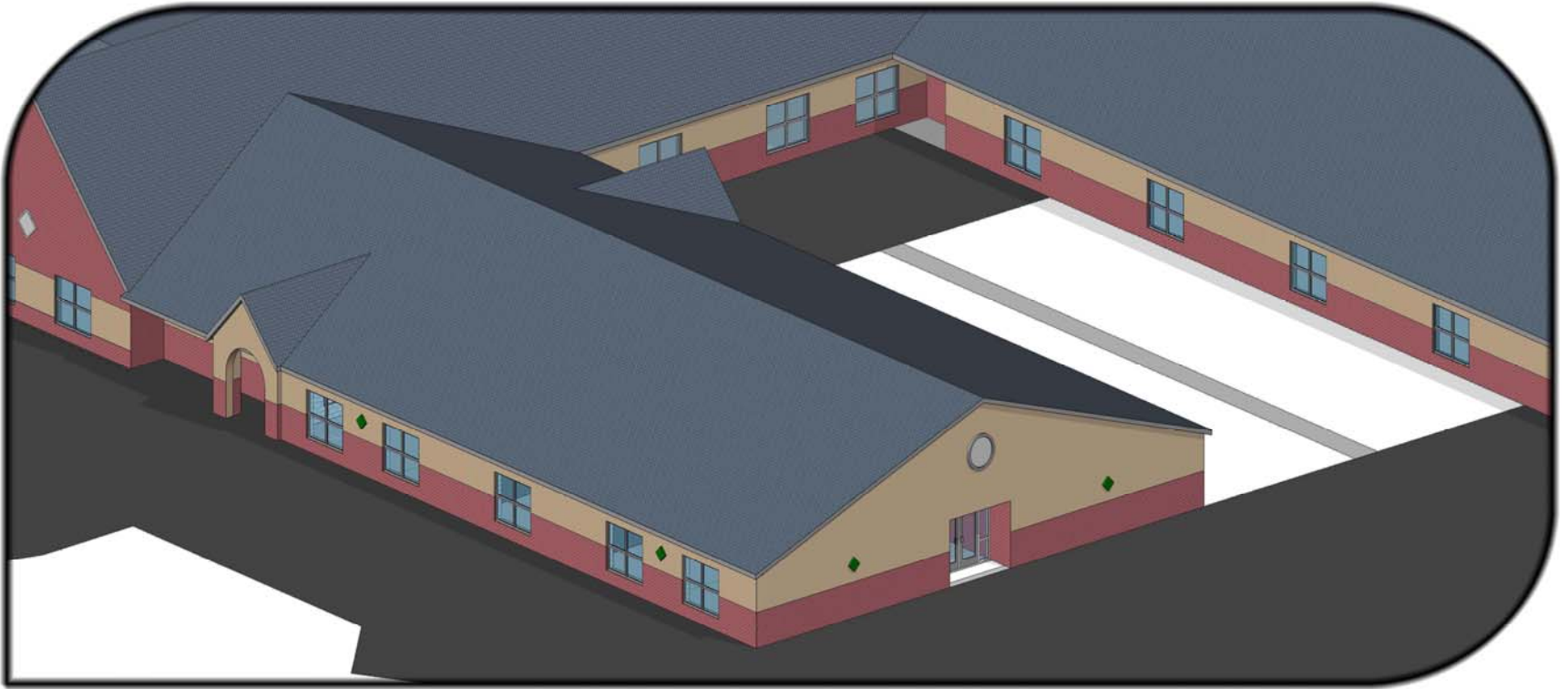


New Elementary School Site Layout



# K-6 Referendum Question

- Prairie Elementary will be expanded to make it a true 6-track school.
  - Prairie was designed as a 6-track school at a time when we had ½ day kindergarten. Additional classrooms are needed to get us back to a 6-track building and to utilize the facility (music rooms, large group instruction rooms, etc. as they were intended).
  - This plan adds four classrooms and restroom space to the facility.

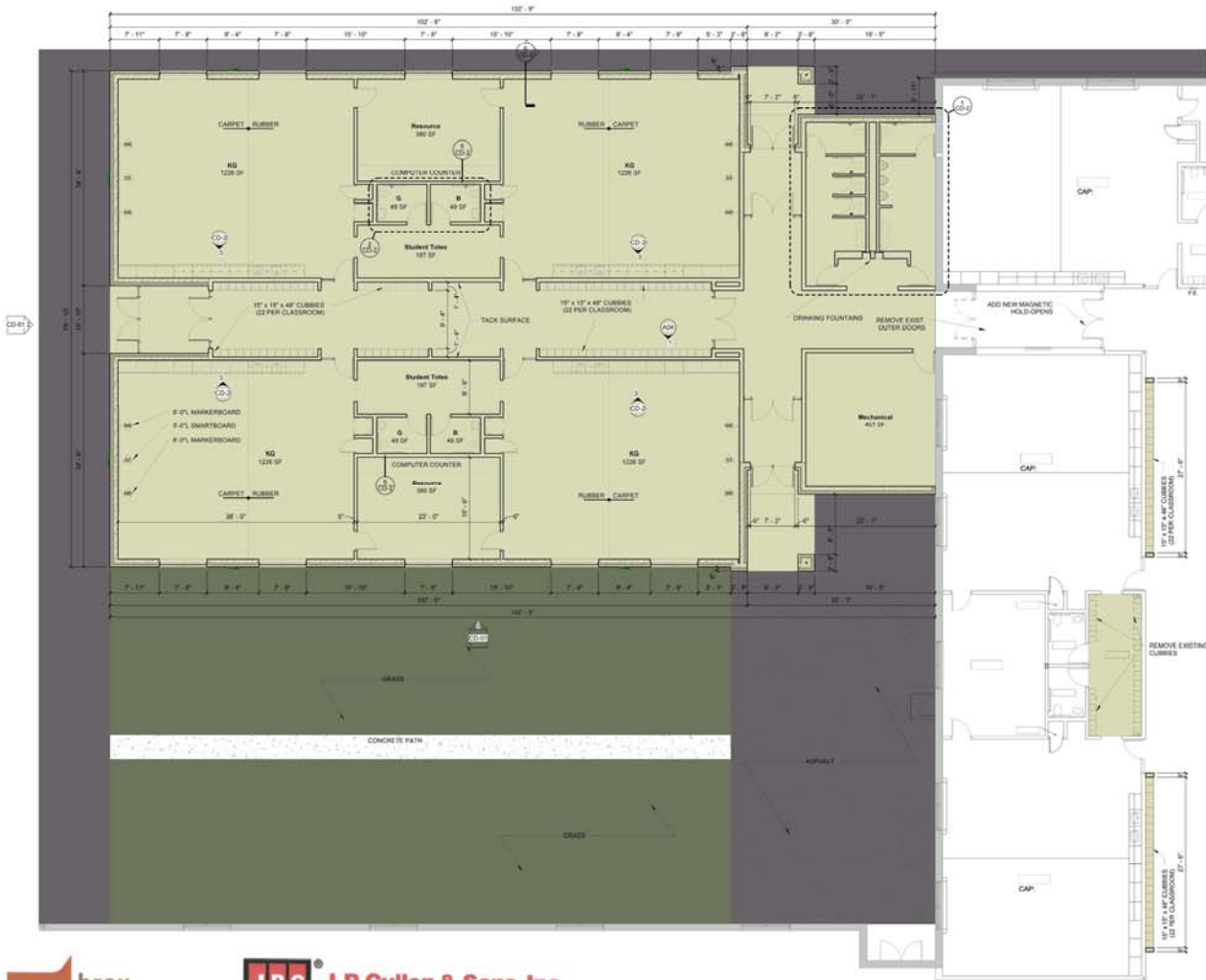


*Prairie Elementary School Addition-Outside Rendering*





# Prairie Elementary School Addition-Floor Plan



# K-6 Referendum Question

- The Heritage and Intermediate Schools will be combined to serve all of the district's students in grades 5-6.
  - The gymnasium that is in the current Heritage part of the building would be combined with the current Heritage cafeteria to make one large commons area for all the 5-6 students to eat.
  - Outdated bathroom facilities will be upgraded for maintenance/accessibility purposes.
  - Some classrooms will be modified to better serve programmatic needs.





# Grade 7-12 Referendum Question

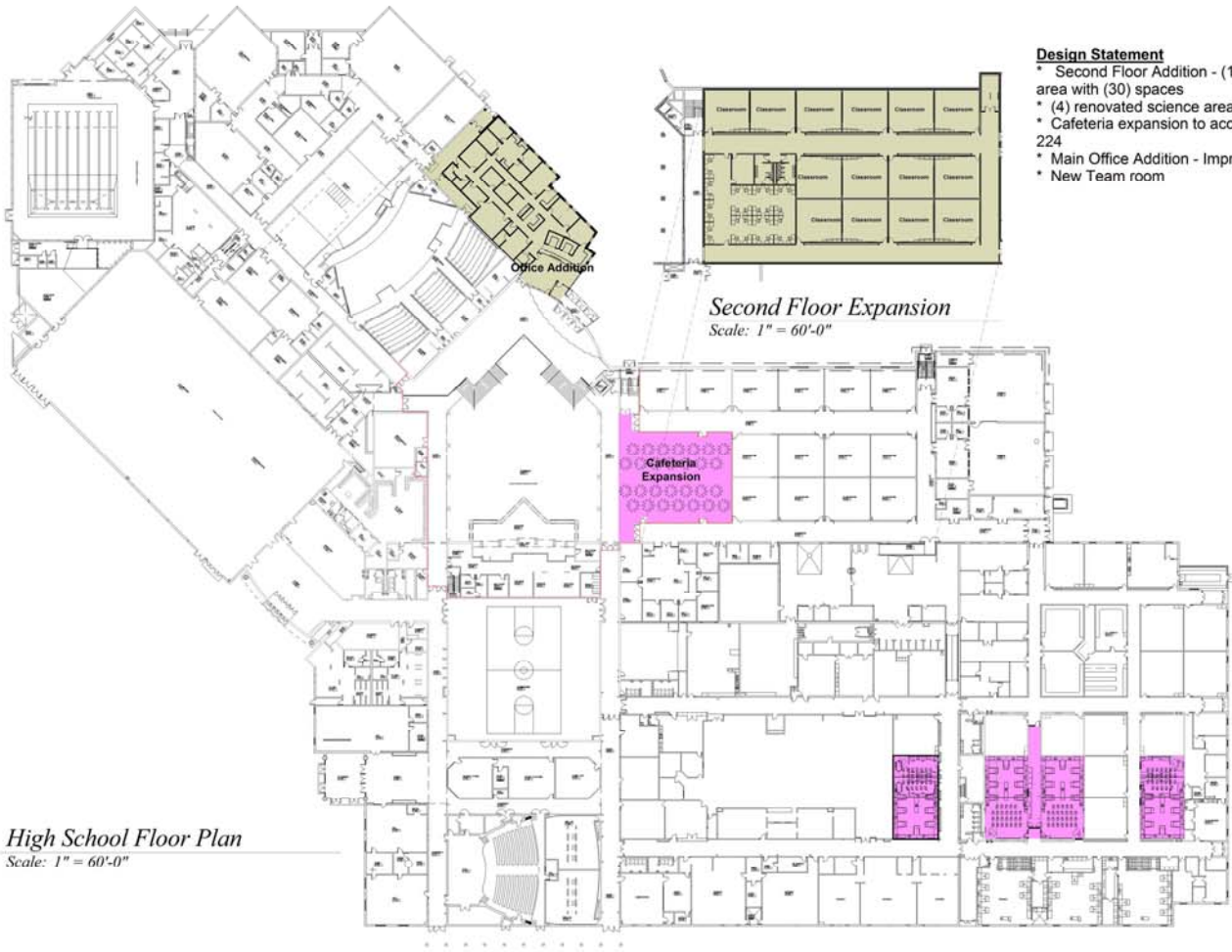
## INITIAL RESOLUTION

AUTHORIZING GENERAL OBLIGATION BONDS IN AN AMOUNT  
NOT TO EXCEED \$8,450,000  
FOR A 9-12 SCHOOL BUILDING PROGRAM

BE IT RESOLVED by the School Board of Waunakee Community School District, Dane County, Wisconsin that there shall be issued pursuant to Chapter 67 of the Wisconsin Statutes, general obligation bonds in an amount not to exceed \$8,450,000 for the public purpose of paying the cost of a school building program, consisting of the construction of additions to, roof replacement at and remodeling, furnishing and equipping of Waunakee High School.

# Grade 7-12 Referendum Plan

- The high school renovations include:
  - adding a 2<sup>nd</sup> floor to the high school (as was planned during the last remodeling project at the high school).
  - remodeling classrooms to serve as science labs (we currently have a need for more science space).
  - move the high school offices to an addition in the front of the building to make room for the commons to be expanded, and to improve building safety.
  - this renovation plan expands the student capacity in the high school by 300 students, to 1,500 students.
  - The expanded space at the high school will also serve growing enrollment at the middle school and will serve the 7-12 grade through 2015.
- The total estimated cost of this grade 7-12 option is: \$8.45 million.



High School Floor Plan  
Scale: 1" = 60'-0"

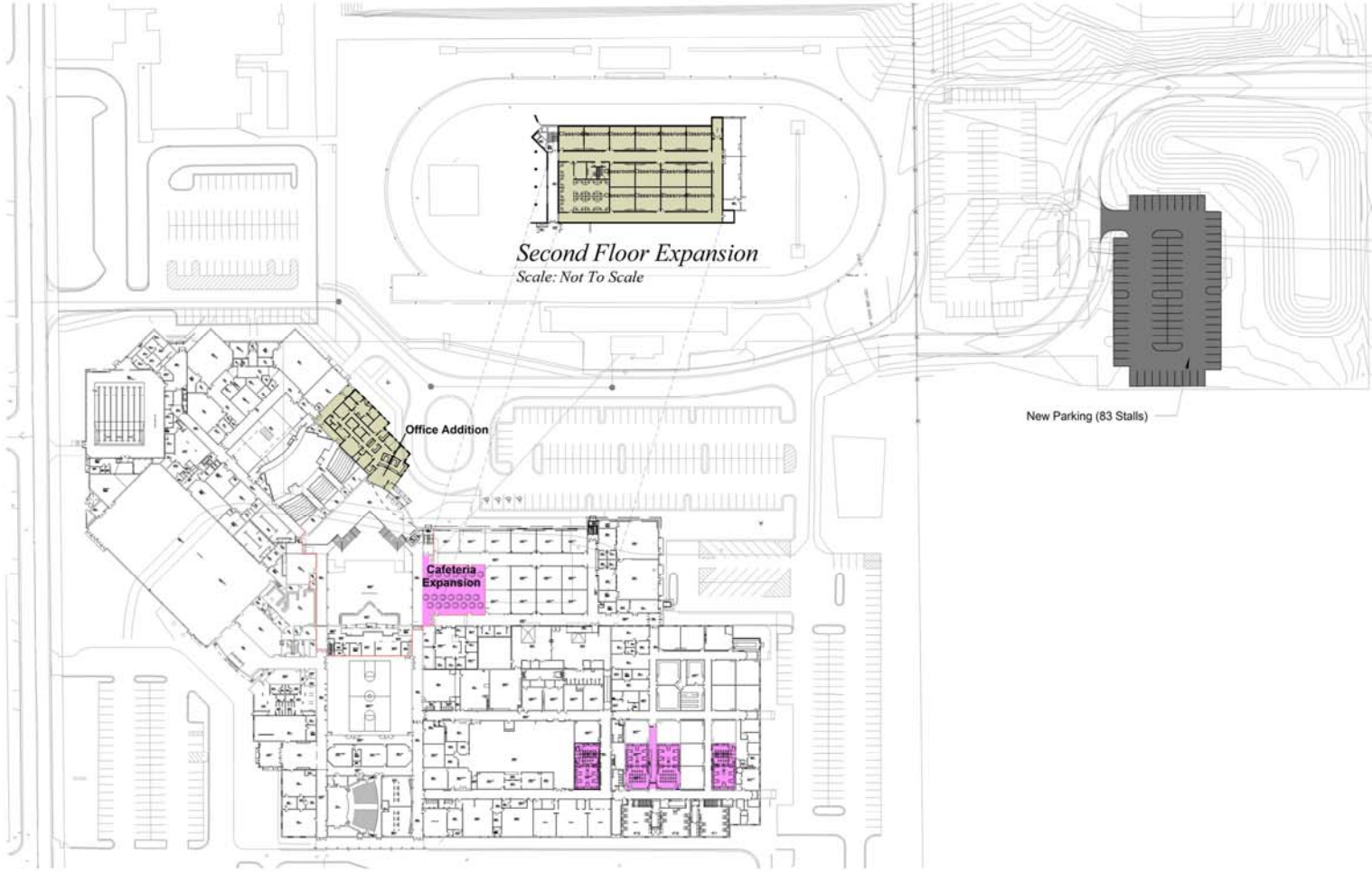
Second Floor Expansion  
Scale: 1" = 60'-0"

**Design Statement**

- \* Second Floor Addition - (14) classrooms & staff planning area with (30) spaces
- \* (4) renovated science areas w/chemical storage
- \* Cafeteria expansion to accommodate an additional capacity of 224
- \* Main Office Addition - Improved security
- \* New Team room

High School Renovations/Addition





*Second Floor Expansion*  
Scale: Not To Scale

Office Addition

Cafeteria Expansion

New Parking (83 Stalls)

High School Renovations/Addition



High School Site Plan  
Scale: Not To Scale





*High School Office Addition-Outside Rendering*



# Referendum to Exceed Revenue Caps for Operational Purposes

- The operational costs of this referendum are associated with two of the referendum questions. The question related to exceeding the revenue limit for recurring operational costs includes funds for heating, cooling, utilities, additional custodial and maintenance staff, and technology department needs.
- All funds are targeted at costs associated with facility expansion. No funds are designated for teacher or administrative positions.

# Referendum to Exceed Revenue Caps for Operational Purposes

RESOLUTION AUTHORIZING THE SCHOOL DISTRICT BUDGET TO EXCEED REVENUE LIMIT FOR RECURRING OPERATIONAL COSTS

BE IT RESOLVED by the School Board of Waunakee Community School District, Dane County, Wisconsin, that the revenues included in the School District budget be authorized to exceed the revenue limit specified in Section 121.91, Wisconsin Statutes, by \$375,000 for the 2011-2012 school year and thereafter and by an additional \$375,000 (for a total of \$750,000) for the 2012-2013 school year and thereafter, for recurring purposes, consisting of paying operational costs of the District.

# Referendum to Exceed Revenue Caps for Maintenance Purposes

RESOLUTION AUTHORIZING THE SCHOOL DISTRICT BUDGET TO EXCEED REVENUE LIMIT FOR RECURRING MAINTENANCE COSTS

BE IT RESOLVED by the School Board of Waunakee Community School District, Dane County, Wisconsin, that the revenues included in the School District budget be authorized to exceed the revenue limit specified in Section 121.91, Wisconsin Statutes, by \$375,000 for the 2010-2011 school year and thereafter, for recurring purposes, consisting of paying maintenance costs of the District.



# Referendum to Exceed Revenue Caps for Maintenance Purposes

- The question related to exceeding the revenue limit for recurring maintenance costs includes funds to maintain all of the buildings across the school district. The school district has \$180,000 in the general budget for facility maintenance projects, and to allocate additional dollars to this budget falls within the revenue caps and would negatively impact funding for instructional programs. The referendum question related to facility maintenance will provide a base dollar amount of \$375,000 that can be used on an annual basis to plan for and address larger maintenance projects in all schools.

# Cost of Referendum to Taxpayers

- The average value of a home in the Village of Waunakee is \$285,000. If all four referendum questions are approved, the tax impact on a home valued at \$285,000 is initially \$296 spread over 3 years.
- Stated another way, for every \$100,000 of assessed value, the impact of the four referendum questions is initially \$104 spread out over 3 years.

# Federal Stimulus Program

- The Federal Stimulus Program has allowed for low/no interest loans to school districts that have referendum approved building projects. Based on values applied to projects last year, school districts that had approved referendums for building projects received approximately 36% of their bonds at a low interest rate. For the referendum in Waunakee, this could mean a savings of just under \$9 million in interest payments over the course of 20 years.

# FAQ—Open Enrollment

- The State of Wisconsin has an Open Enrollment program that all districts are required to participate in. Applications In and Out of a school district must be approved by a local School Board according to State law and School Board policy. Parents have the right to appeal any School Board decision to the State of Wisconsin. The Waunakee School Board does deny Open Enrollment In applications when space is not available.

## Open Enrollment Students

<b>Grade</b>	<b>In</b>	<b>Out</b>	<b>Net</b>
<b>EC</b>	1	1	0
<b>K</b>	12	2	10
<b>1</b>	8	4	4
<b>2</b>	3	0	3
<b>3</b>	6	5	1
<b>4</b>	9	1	8
<b>5</b>	1	5	-4
<b>6</b>	1	2	-1
<b>7</b>	6	0	6
<b>8</b>	5	4	1
<b>9</b>	8	0	8
<b>10</b>	7	3	4
<b>11</b>	10	7	3
<b>12</b>	14	7	7
<b>Total</b>	<b>91</b>	<b>41</b>	<b>50</b>

# Open Enrollment Budget Impact

- Students IN (Revenue) \$586,313
  - Students OUT (Expenses) \$264,163
  - NET IMPACT +\$322,150
- 
- The District receives \$6,443 per student. (Additional Special Education Amounts May Apply).
  - The District must accept students under certain parameters set forth in State Statute.
  - Waunakee has a policy that we deny students at any level where class sizes exceed “Optimal” levels.
  - Parents have the ability to appeal any application denials to the Department of Public Instruction.

# Questions from the Audience

- We are happy to answer your questions related to the April 6<sup>th</sup> Referendum.
- Please keep the focus on the April 6<sup>th</sup> Referendum Questions.
- Please come to one of the microphones to ask your question so everyone can hear you, and please state your name.
- We will organize our discussion by question.

# Referendum Question #1

- K-6 question includes construction of a new elementary school, adding four classrooms to Prairie, and renovations to Heritage/Intermediate.
- What questions do you have about this plan?

# Referendum Question #2

- Grade 7-12 plan includes adding a second level to the high school, expanding the commons, moving the offices to the front of the building, and creating additional science rooms.
- What questions do you have about this plan?

# Referendum Question #3

- This question asks to exceed the revenue caps by \$750,000 for operational expenses related to the facility projects (increased cost of utilities, added custodial/ maintenance time, added technology needs).
- What questions do you have about this plan?

# Referendum Question #4

- This question asks to exceed the revenue caps by \$375,000 for maintenance projects.
- What questions do you have about this plan?

# THANK YOU!

- The Board of Education greatly appreciates your interest in the Waunakee Community School District.
- If you have additional questions about the April 6<sup>th</sup> Referendum, please contact Randy Guttenberg, District Administrator, at 849-2000 or via e-mail at [referendum@waunakee.k12.wi.us](mailto:referendum@waunakee.k12.wi.us) .

