

Name:

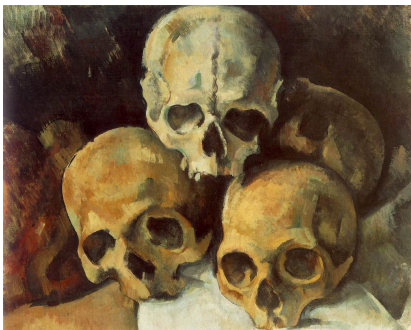
Hour:

Pastel Still Life ala Cézanne



Paul Cézanne was born in 1839 in Aix-en-Provence, a town in the south of France. Cézanne developed artistic interests at a young age and wanted to become a painter. As a boy, he also became friends with Emile Zola, who would later become a well-known writer. Emile encouraged Paul's interest in painting. When he moved to Paris, Emile sent Paul letters describing the Parisian art scene. Emile's letters made Paul want to travel to Paris to paint.

Cézanne's interest in art did not please his father, who was a wealthy banker that wanted Cézanne to pursue a more "worthy" career in business. It took a long time, but eventually Paul got up the courage to ask his father if he could go to Paris to study painting. At first it didn't go well for Paul, and he returned home frustrated after 6 months. After working with his father for a year, Paul decided to give it another try. This time he became friends with an Impressionist painter and became more involved in the art community.



Cézanne's first paintings were very dark and moody. Under the influence of the Impressionists, Cézanne spends more time painting from nature and his canvases become lighter and brighter. Although he created numerous portraits, Cézanne main focus was on landscapes and still-lives. His brushstrokes are clearly visible, and he relied on color to bring out the values and forms of his objects. He especially liked noticing the simple geometrical shapes like ovals and circles that occurred often in nature. Artists, like Picasso and the Cubists, especially admired the way the broken up planes of color defined the space in his paintings.

Cézanne gained more recognition in the later part of his career. He became somewhat of a recluse though, and his friendship with Emile Zola ended when Cézanne believed Emile had made fun of him in one of his novels. Paul Cézanne died from pneumonia after getting caught in a storm while walking to his secluded studio in 1906.



Project

For this project you will be using soft pastels to create a drawing of a still life. It is important for you to keep the following things in mind:

- Start with some thumbnail sketches to figure out your **composition**. You want a sense of **balance, unity, and emphasis**.
- When you find a working composition, transfer it to final paper with light pencil lines.
- Use the pastels to render the **values, and colors** you see. Avoid using too much black in shadows. Instead try to blend **complimentary colors** to create darker values and shades.



- Pay attention to the values. How are you creating a sense of **depth** in your drawing? Do the objects in the foreground **contrast** with the background?
- You may change the colors of objects as long as you maintain a sense of the existing values!