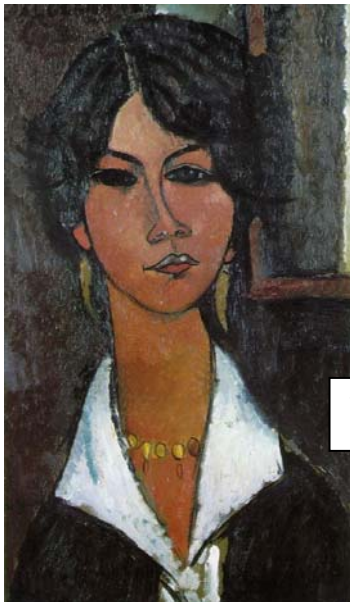


Name:
Hour:

Self-Portrait in the style of Amadeo Modigliani

Amadeo Modigliani was an Italian painter who spent much of his career in Paris. He is known for his **angular** and **elongated portraits**, as well as his use of strong **simple lines** and **shapes**. During a portion of his career he carved sculptures that mimicked the style of **African masks**. This influence is also visible in his paintings.



Modigliani was born to a Jewish family in Livorno, Italy. For much of his childhood, Modigliani's family was poor. He was close with his mother who taught him at home and sent him to study with painters first in Livorno, then later in Florence and Venice. Modigliani experienced **poor health** throughout his childhood, battling with pneumonia and eventually developing tuberculosis.

Woman of Algiers was painted in 1917.

In **1907 Modigliani arrived in Paris** where he quickly became part of the social scene. Modigliani was

thought to be very handsome and was known for his wild partying. This was not good for his poor health and he made several trips back to Italy to recover. He always returned to Paris, however, and resumed his rowdy lifestyle.

Modigliani became romantically involved with the artist **Jeanne Hébuterne** in 1917. Despite their stormy relationship, Jeanne posed for many of Modigliani's portraits. In 1918 they had a daughter. When Modigliani died in 1920 from tuberculosis, Jeanne was filled with grief. The day after he died she threw herself from a window, killing herself and their second unborn child instantly.



Jeanne Hébuterne with Hat



Despite his short life, Modigliani created an amazing body of work. His trademark style is reflected in the **mask-like faces** of his portraits with very little detail. Poses and expressions are subtle with slight smirks or tilts to the head. In his paintings there is an **emphasis on simple lines and large, flat areas of color**. **Shapes** are not complicated and have **minimal shading**. Paint is applied in **layers** with a lot of **texture**.

Head of a Woman,
1910-11

The Painting

For this project we are going to stretch your imagination a bit to create an acrylic portrait in the style of Modigliani. Follow the steps and guidelines below for a successful project!

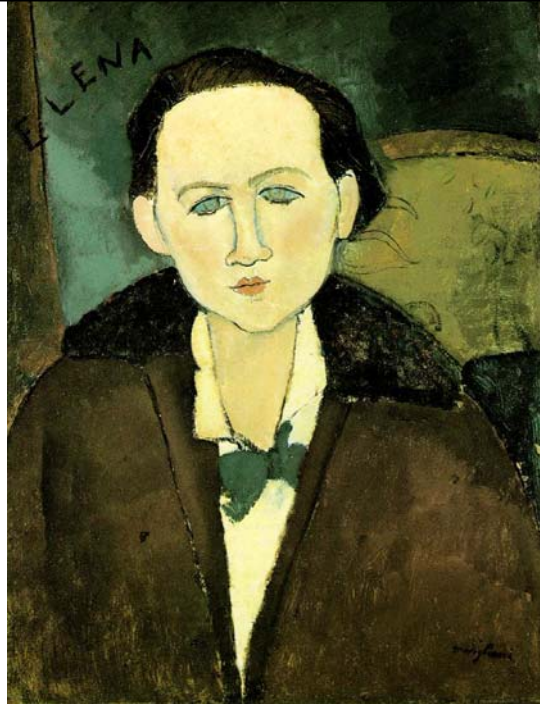
1. Begin by using a mirror to create a few thumbnail sketches. Think about Modigliani's style and how he **distorts** features to create **elongated and angular faces**. Use the boxes below to create simple, **stylized**, portrait sketches.
 - How much of the shoulders will show?
 - Will you use a profile, 3/4 view, or have the face forward?
 - What will you **exaggerate** in the portrait? Eyebrows, nose, mouth, etc.?
 - How will you use **organic** and/or **geometric shapes**?
 - Remember to fill the space!

--	--	--

2. When you have completed your thumbnail sketches (above), circle the one you feel is the most interesting and will be the most successful. Enlarge this drawing to your canvas board in pencil.
3. Using the painting techniques we have practiced in class, paint your portrait with acrylic paints.
 - How will **texture** enhance the portrait?
 - What colors are best to mix to **create shadows**?
 - How can you layer colors to create **depth**?
 - Remember to start with the background and work your way forward!



Girl in a Green Blouse (left) and **Elena Pavlovski** (right) were both painted in 1917.



Vocabulary

Texture: How something feels, or looks like it feels

Distort: To deliberately exaggerate or manipulate an image to the extreme

Stylized: an artwork simplified to its most basic parts (use less detail to show the same thing)

Organic Shape: fluid shapes similar to those occurring in nature

Geometric Shape: shapes with regular contours, and straight edges such as squares, triangles, or circles

Emphasis: part of an artwork that is the most noticeable