



# EXECUTIVE SUMMARY REPORT

## WAUNAKEE SCHOOLS: NEW INTERMEDIATE SCHOOL

Week ending April 8<sup>th</sup>, 2016

### What's New?

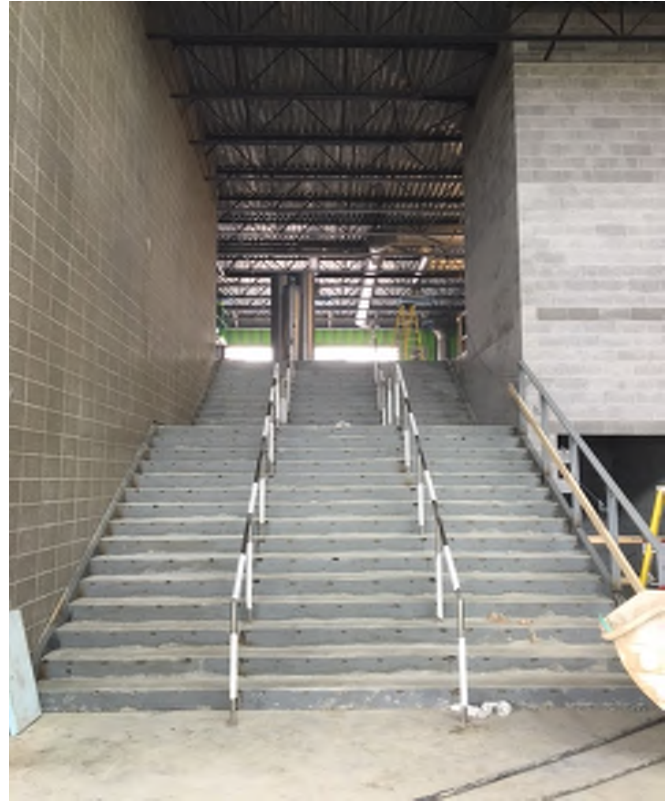
With all the rain and snow these past few weeks, we are fortunate that the roofers have the building sealed and water tight. We've started drywall and taping in area C while the second floor walls are getting painted out. Ceiling grid is being installed and flooring will be following in 2 weeks. On the outside, metal panel install continues and curtainwall is being set for areas C & D.

### The Past Two Weeks

- Cafeteria Stairway completed
- (M)echanical (E)lectrical (P)lumbing Rough-Ins Areas C & D
- Interior Block & Exterior Cast Stone placement
- Millwork installations – 2<sup>nd</sup> Floor
- Acoustical Ceiling Grid 2<sup>nd</sup> Floor
- Mechanical and Electrical Trim

### • Coming Up in the Weeks Ahead

- Permanent Power
- Metal Panels
- Exterior Brick
- Curtainwall and glass at the front entry and cafeteria
- Resilient Flooring and Carpet at 2<sup>nd</sup> floor



*Large stairway set and poured connecting the cafeteria to the 2<sup>nd</sup> floor school wing*



*Before installing the ceiling grid (shown above) we make sure that all the large, above ceiling systems are in place.*



*Roofers finishing up over the Cafeteria.*



**Did you know?** Although built more than 4,500 years ago, the Great Pyramid was built with surprising accurate measurements. The bottom of the pyramid makes almost a perfect square. On top of that, the four sides of the pyramid are almost exactly oriented with the four cardinal directions. The alignment is off by around 1/15<sup>th</sup> of a degree.



# EXECUTIVE SUMMARY REPORT

## WAUNAKEE SCHOOLS: NEW INTERMEDIATE SCHOOL



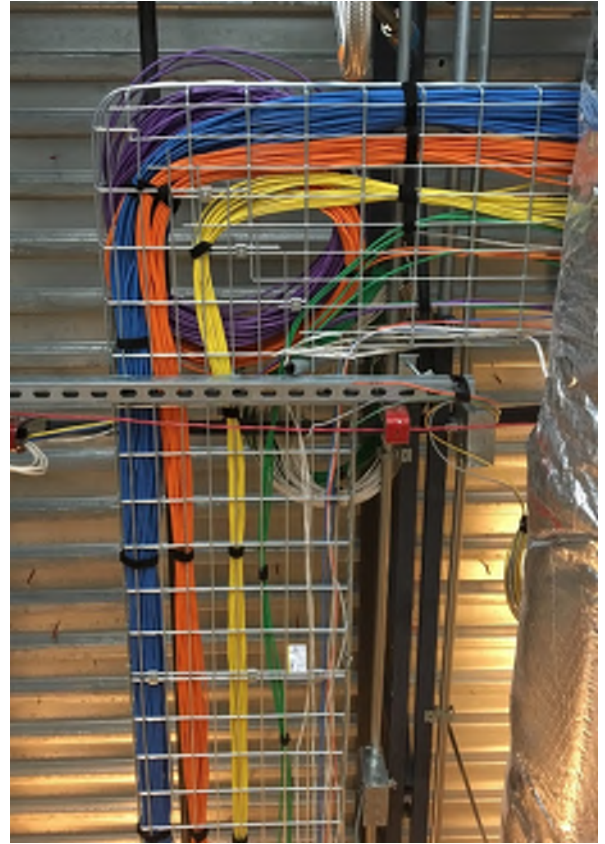
*The overhead doors in the kitchen area will be motorized and coil up behind the door opening.*



*Elevator is ready for install!*



*New wall tile color!*



*Use of colored data cabling to distinguish different systems*



*Metal Panels on 2<sup>nd</sup> floor Area A North.*



*The front entry to the building with newly set curtainwall and glass.*