



EXECUTIVE SUMMARY REPORT

WAUNAKEE SCHOOLS: NEW INTERMEDIATE SCHOOL

Week ending July 1st, 2016

What's New?

Nothing like the smell of hot asphalt in the summer to remind us that, once again, construction season in Wisconsin is in full swing. Sidewalks and curbs on all sides of the school is almost complete and they just started placing blacktop this week. Woodland Drive has been re-opened with new paved surface and a bike lane. The wood floor in the gym is sealed and is curing. The playground equipment was set this week and the engineered chips are being placed. The bleacher install will start up after the long weekend. Resilient flooring is being installed in Area D and installers are moving toward the Cafeteria. Doors are being swung in Area C.

The Past Two Weeks

- Playground Equipment Install
- Social Stair Painting
- Pre-Punchlist Walkthrough 2nd Floor
- Landscaping and Final Seeding
- Site Concrete
- 2nd Floor Final Cleaning
- Area C Doors & Hardware
- Area D Flooring
- Gym – Wood Flooring Cure

Coming Up in the Weeks Ahead

- Asphalt Paving
- 2nd Floor Punch-list Walkthroughs
- 1st Floor Final Cleaning
- Install Playground Equipment
- Gym – Specialties – Bleachers, Scoreboards
- Area C Millwork / Casework / Music Storage
- Flooring ongoing
- Furniture Staged in Cafeteria



Blacktop for the main parking lot on the North side of the building



A very colorful display case lines the school's main corridor. (left)



Multiple different shades of yellow ceiling tile in the 2A corridor indicate that you are in the Sun themed classroom Village



Did you know? Asphalt is cost effective, smooth and sustainable. It is cost effective to repair a worn-out highway with asphalt. The smoothness of the asphalt lowers a vehicle's fuel consumption. Asphalt pavements are America's most recycled product!



EXECUTIVE SUMMARY REPORT

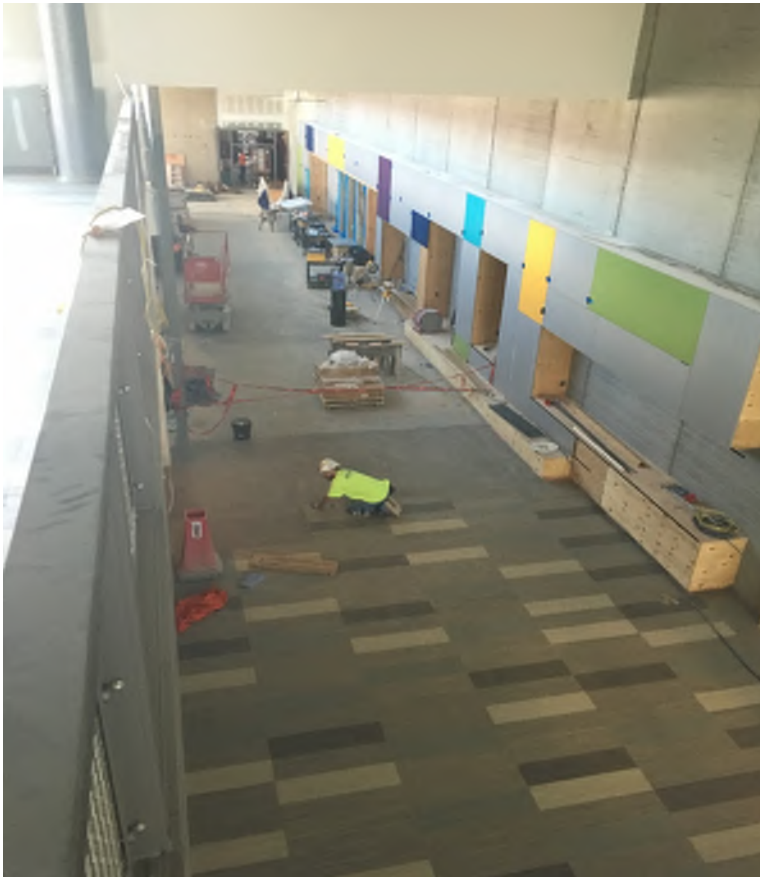
WAUNAKEE SCHOOLS: NEW INTERMEDIATE SCHOOL



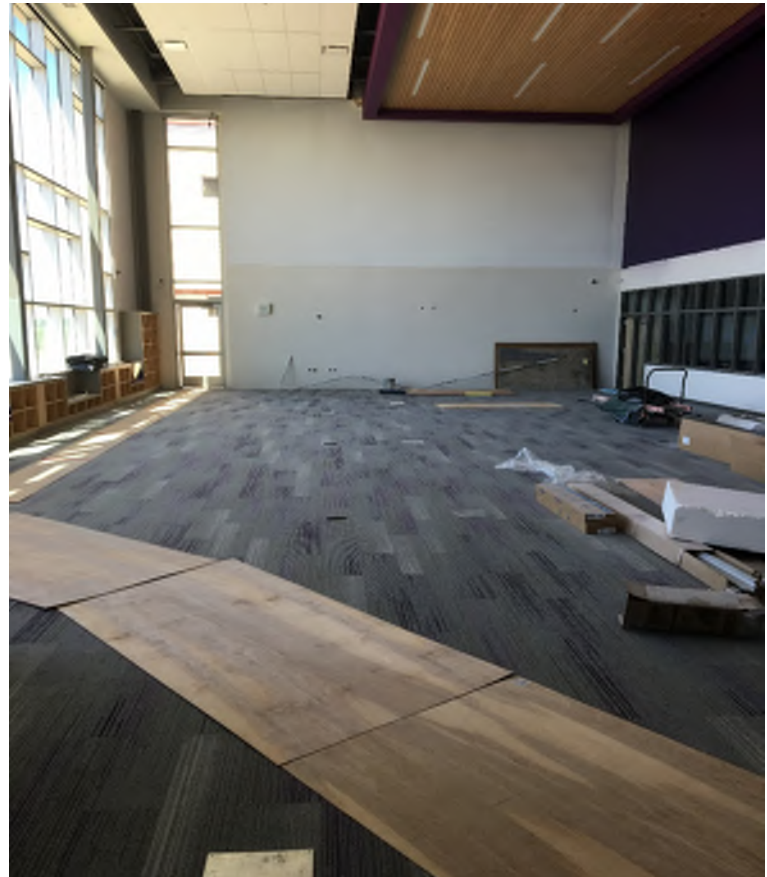
I don't know about you, but I think this playground equipment looks like a lot of fun!



Now that final cleaning is complete, 2nd floor Area B is ready for furniture!



The flooring installers have been hard at work in the main commons corridor leading into the cafeteria.



Carpet installation is complete in the LMTC.