



EXECUTIVE SUMMARY REPORT

WAUNAKEE SCHOOLS: NEW INTERMEDIATE SCHOOL

Week ending July 15th, 2016

What's New?

This building is ready for new furniture to be installed on Monday! Furniture and equipment will start on the 2nd floor and will move down to the 1st floor the following week. Painting, flooring, and ceiling tile installers are moving through the music, kitchen, and cardio areas. The bleachers in the gym were installed and look great! Outside, we are complete with all site concrete and continue to place asphalt paving on the South and West side of the building. You will start seeing trees and shrubs next week.

The Past Two Weeks

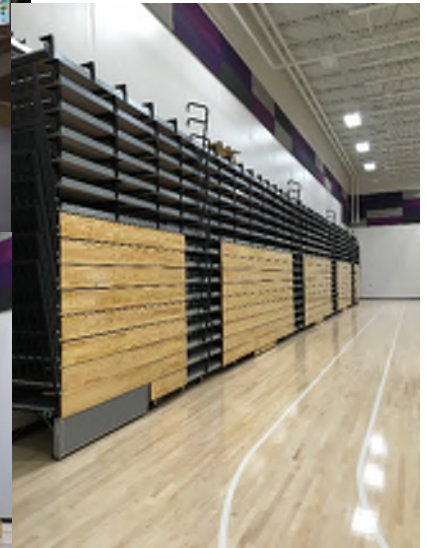
- Asphalt Paving – North Parking Lot
- 2nd Floor Final Cleaning
- 1st Floor Final Painting
- Front Entry Metal Panels
- Music Storage & Casework
- Bleacher & Scoreboard install in Gym
- Art Tile install

Coming Up in the Weeks Ahead

- Asphalt Paving – South Parking Lot
- Landscaping – Trees, Shrubs, Outcroppings
- A & B certificate of Occupancy Walk-thru
- Paint Mural in Gym
- 2nd floor A/B – Deliver and Set Furniture
- 1st Floor A/B – Deliver and Set Furniture
- Facilities Start Date & Training
- Front Office Move-in



Colorful, LED backlit art glass tiles mounted in the display case will brighten up the main corridor.



These bleachers look like they can really hold a crowd! I'm excited already for basketball and volleyball games.



Did you know? The Art Tile project was an idea that came from the Intermediate Art Teacher – Melanie Trainor-Burton. The school applied for and received a grant to fund the project. All of the 4th and 5th grade students were bussed to The Vinery in Madison to create and fire the tiles. They were then shipped to Milwaukee to Spolar Studios to fuse them all together and apply to an acrylic backer. They were received onsite this week and installed by Findorff. In all, there were 720 tiles made that represent the sun, water, earth, and wind. We are excited to show the community this feature that will be a prominent part of the entry corridor to the building.



EXECUTIVE SUMMARY REPORT

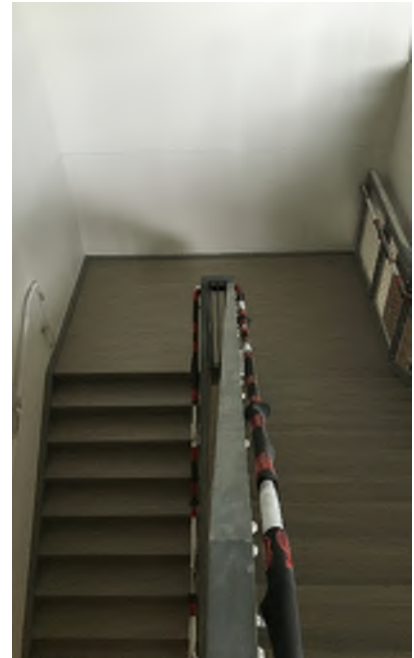
WAUNAKEE SCHOOLS: NEW INTERMEDIATE SCHOOL



A detail similar to this will be in each of the four classroom corridors. The color of the pattern and the cardinal direction will help students and staff orient themselves within the school (Left).



The scoreboard is mounted and ready for action!



Resilient flooring install is complete on all stairs and in the cafeteria.



The last bit of site concrete was poured this week. In the picture to the left, we are getting the South Parking lot ready for blacktop. In the picture below, the earth worker is spreading black dirt for seeding.

